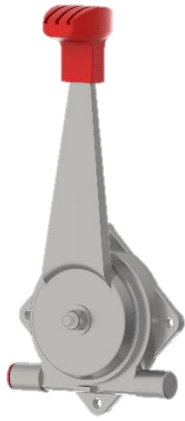


# HAND THROTTLE LEVERS:



□ XTL-240



□ XTL-260



□ XTL-320



□ XTL-340



□ XTL-350



□ XTL-400



□ XTL-402



□ XTL-420



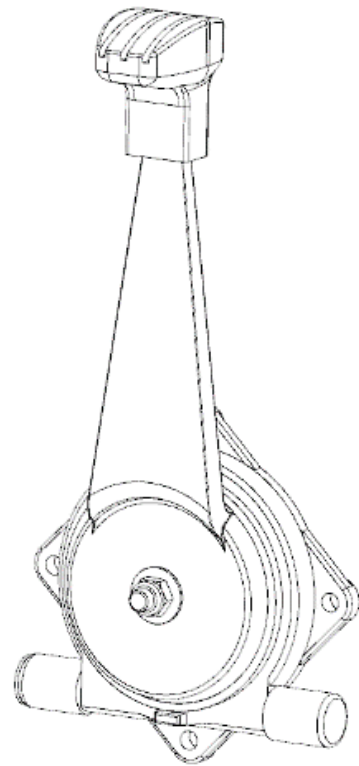
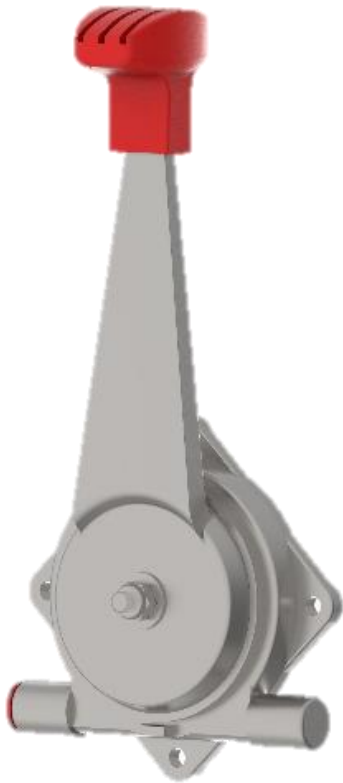
□ XTL-500



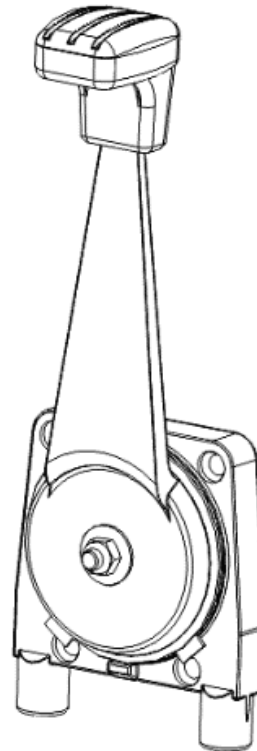
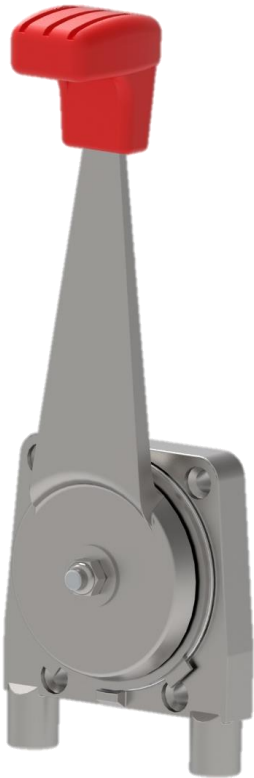
□ XTL-505



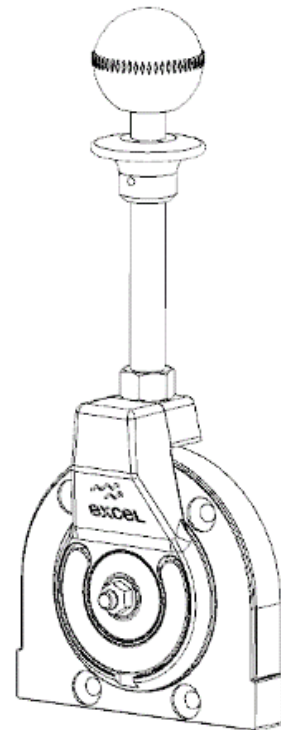
□ XTL-620



- Hand throttle lever in zinc alloy die cast construction.
- Adjustable friction through lock nut on the front surface
- 45 degree of lever movement results in 25mm of travel
- Maximum recommended travel 90mm
- Suitable for light push pull or pull only loads
- Maximum load 10 kgf.
- Lever adjustable in 60° increments.
- Travel stop plates adjustable in 10° increments.
- Knob color : red, black.



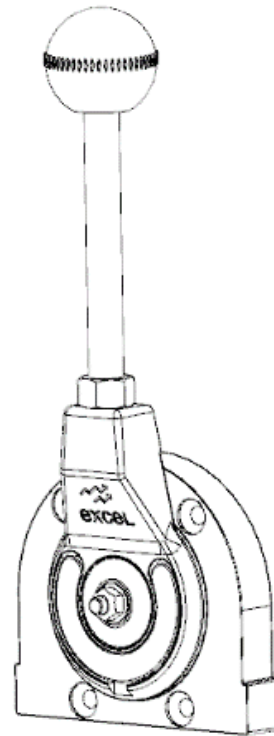
- Hand throttle lever in zinc alloy die cast construction.
- Adjustable friction through lock nut on the front surface
- 45 degree of lever movement results in 25mm of travel
- Maximum recommended travel 90mm
- Suitable for light push pull or pull only loads
- Maximum load 10 kgf.
- Lever adjustable in 60° increments.
- Travel stop plates adjustable in 10° increments.
- Knob color : red, black.



- Hand throttle control available in zinc alloy die cast construction.
- Maximum recommended travel 50mm for angular motion of 90°.
- Maximum load 10kgf.
- Suitable for light duty pull only applications
- Adjustable travel stops.
- Various lock options available. Some examples are shown above

**Note :-**

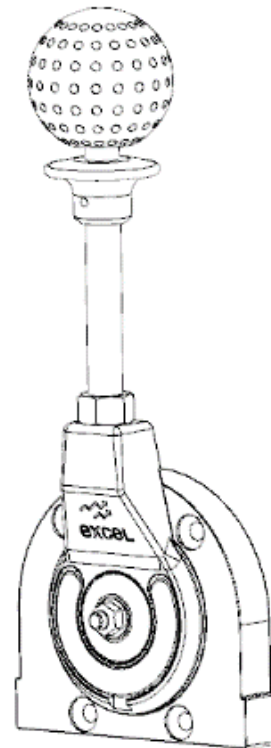
- Handle movement should not exceed 30° from center towards Cable entry side.



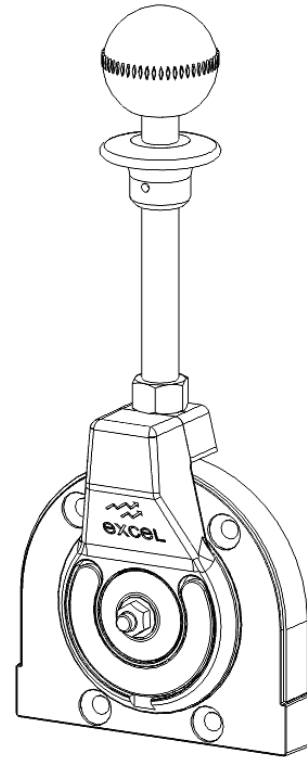
- Hand Throttle Control available in Zinc Alloy Die Cast construction.
- Maximum recommended travel 50mm for angular motion of 90° .
- Maximum load 10kgf.
- Suitable for light duty pull only applications.
- Adjustable travel stops.
- Various lock options available.
- Adjustable friction through nut on the front surface.
- Black colored knob.

**Note :-**

- Handle movement should not exceed 30° from center towards cable entry side.



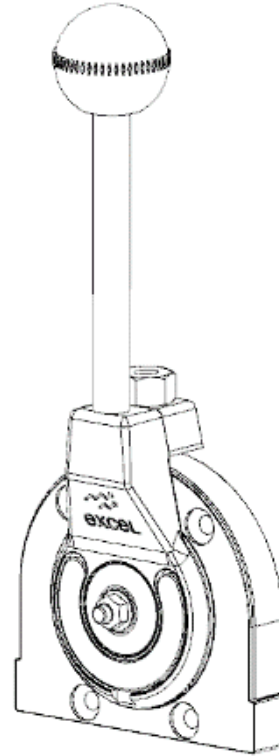
- Ratchet type Hand Throttle Lever.
- Travel : 50mm Max.
- Side mounted.
- Available in Zinc Alloy Die Cast construction.
- Maximum load 10kgf.
- Adjustable travel stops.
- Available with Switch Plate



- ❑ Hand Throttle Lever in Aluminium Alloy Die Cast construction
- ❑ Suitable for light to moderate Pull only or Push Pull loads.
- ❑ Recommended maximum travel 75mm for angular motion of 160° .
- ❑ Maximum load 10 Kgf.
- ❑ Various lock options available. Some examples are shown above.

**Note :-**

- ❑ Handle movement should not exceed 30° from center towards cable entry side

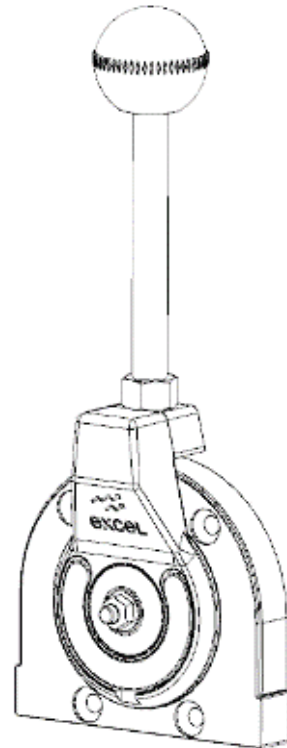


- Hand Throttle Lever in Aluminium Alloy Die Cast construction
- Suitable for light to moderate Pull only or Push Pull loads.
- Recommended maximum travel 80mm for angular motion of 160° .
- Maximum load 10 Kgf.
- Various detent options available. Some examples are shown above.
- Black colored knob.

**Note :-**

- Handle movement should not exceed 30° from center towards cable entry side.

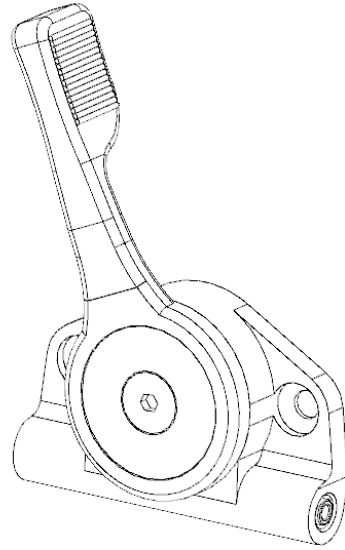




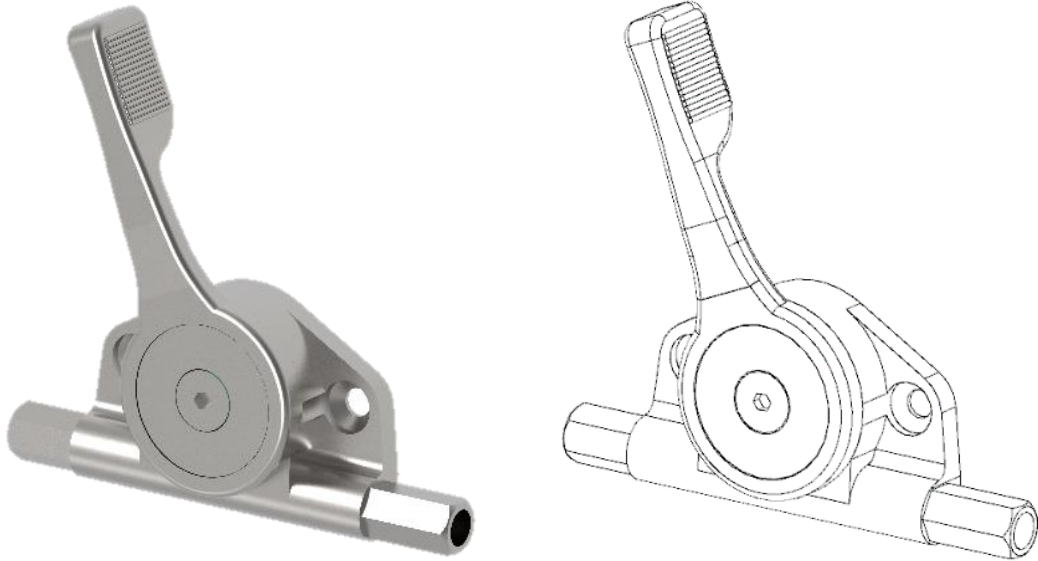
- Hand Throttle Lever in Aluminium Alloy Die Cast construction
- Suitable for light to moderate Pull only or Push Pull loads.
- Recommended maximum travel 80mm for angular motion of 160° .
- Maximum load 10 Kgf.
- Black Colored Knob.

**Note :-**

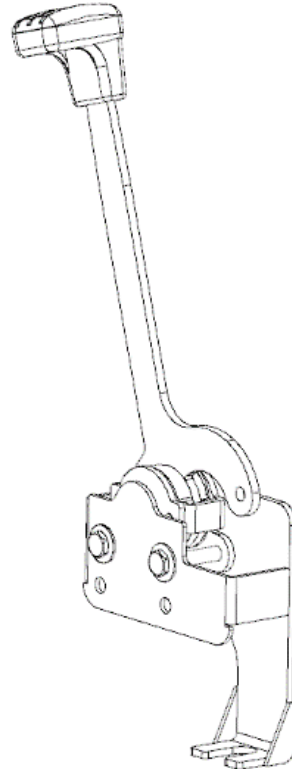
- Handle movement should not exceed 30° from center towards cable entry side.



- ❑ Light duty rack & pinion control with detent as shown.
- ❑ Standard travel 27mm for 99° angular travel.
- ❑ Zinc Alloy based Housing.
- ❑ Suitable for hydraulic motor control.



- ❑ Light duty rack & pinion control with detent as shown.
- ❑ Standard travel 40mm for 145° angular travel.
- ❑ Zinc Alloy based Housing.
- ❑ Suitable for hydraulic motor control.



- Light duty sheet metal hand throttle lever with detent as shown.
- Standard travel 38mm for 82° angular travel.
- Load - 5kgf Max..
- Suitable for light duty pull only application.
- Travel :-
  - From detent position 1 to detent position 2 = 25mm
  - From detent position 2 to detent position 3 = 13mm
- Black Colored Knob.