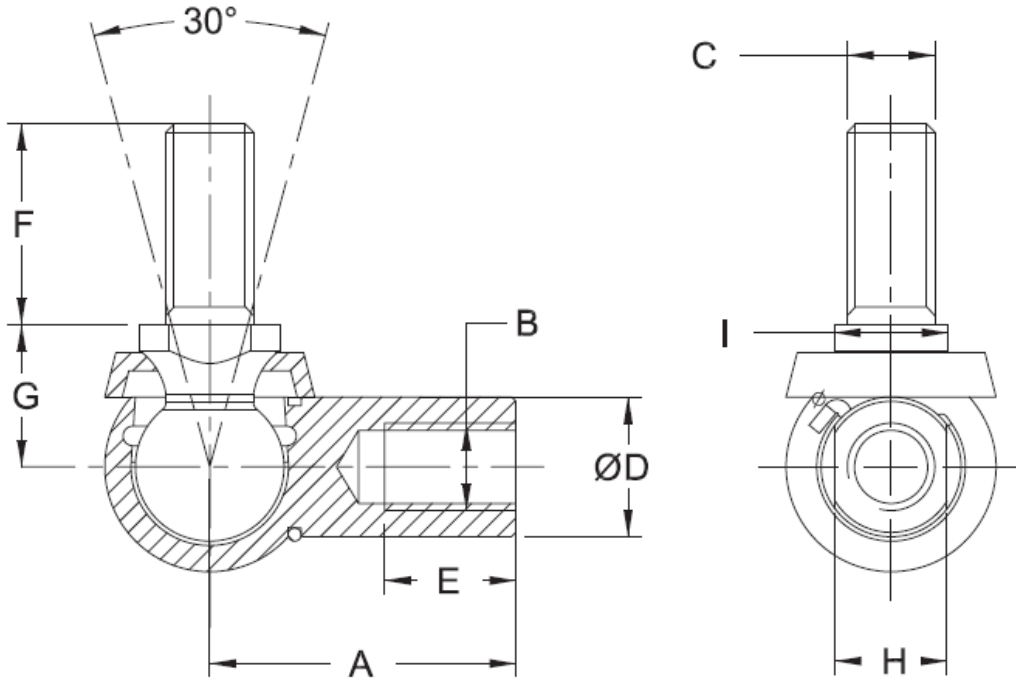


BALL JOINTS:



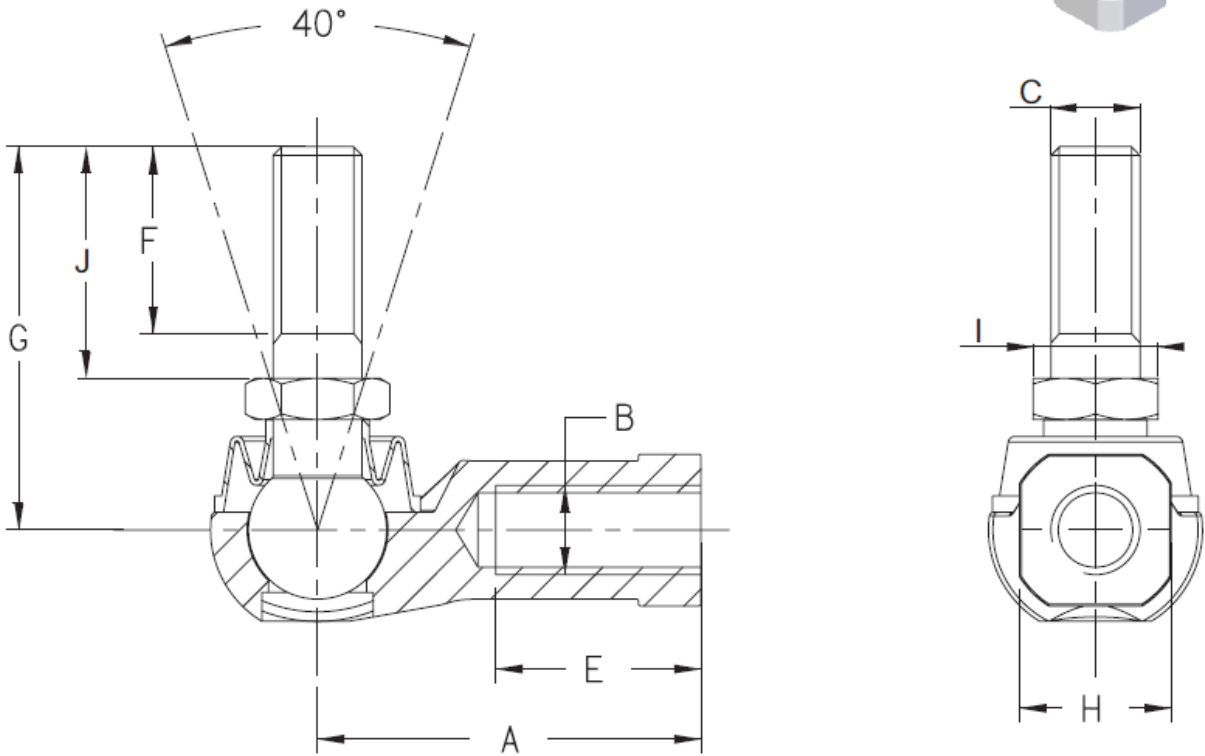
BALL JOINTS XCM:



Part No.	A	B	C	D	E	F	G	H	I
XCM-5	22	M5X0.8	M5X0.8	8	10.2	10.2	9	7	7
XCM-6	25	M6X1.0	M6X1.0	10	11.5	12.5	11	12	8
XCM-8	30	M8X1.25	M8X1.25	13	14	16.5	13	11	11
XCM-10	35	M10X1.5	M10X1.5	16	15.5	20	16	13	13

- Machined Ball Joints as per DIN 71802
- With safety retainer clips.
- Zinc plated

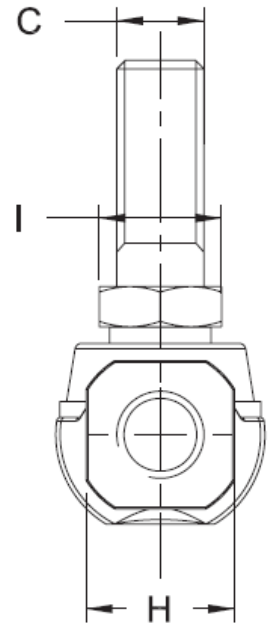
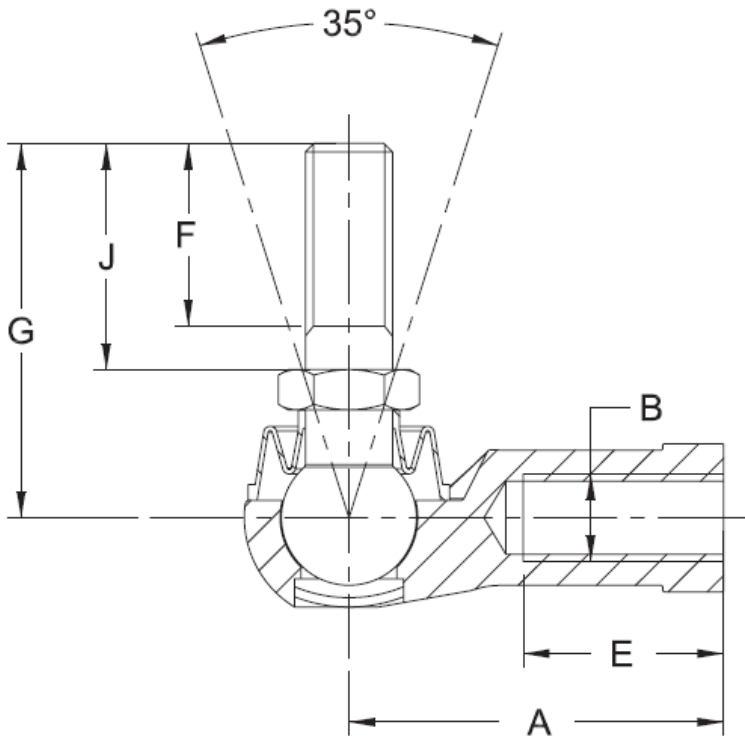
BALL JOINTS XCT:



Part No.	A	B	C	E	F	G	H	I	J	Static Load KN
XCT-6	30	M6x1.0	M6x1.0	16	11	26	11	10	15	9.9
XCT-8	36	M8x1.25	M8x1.25	19	12	31	14	12	17	12.5
XCT-10	43	M10x1.5	M10x1.5	23	21	43	17	14	26	18.3
XCT-10S	43	M10x1.25	M10x1.25	23	15	37	17	14	20	18.3

- Rubber boot NBR based special synthetic rubber
- LH threads available
- Body : Zinc/ A1 Alloy
- Stud : S35C

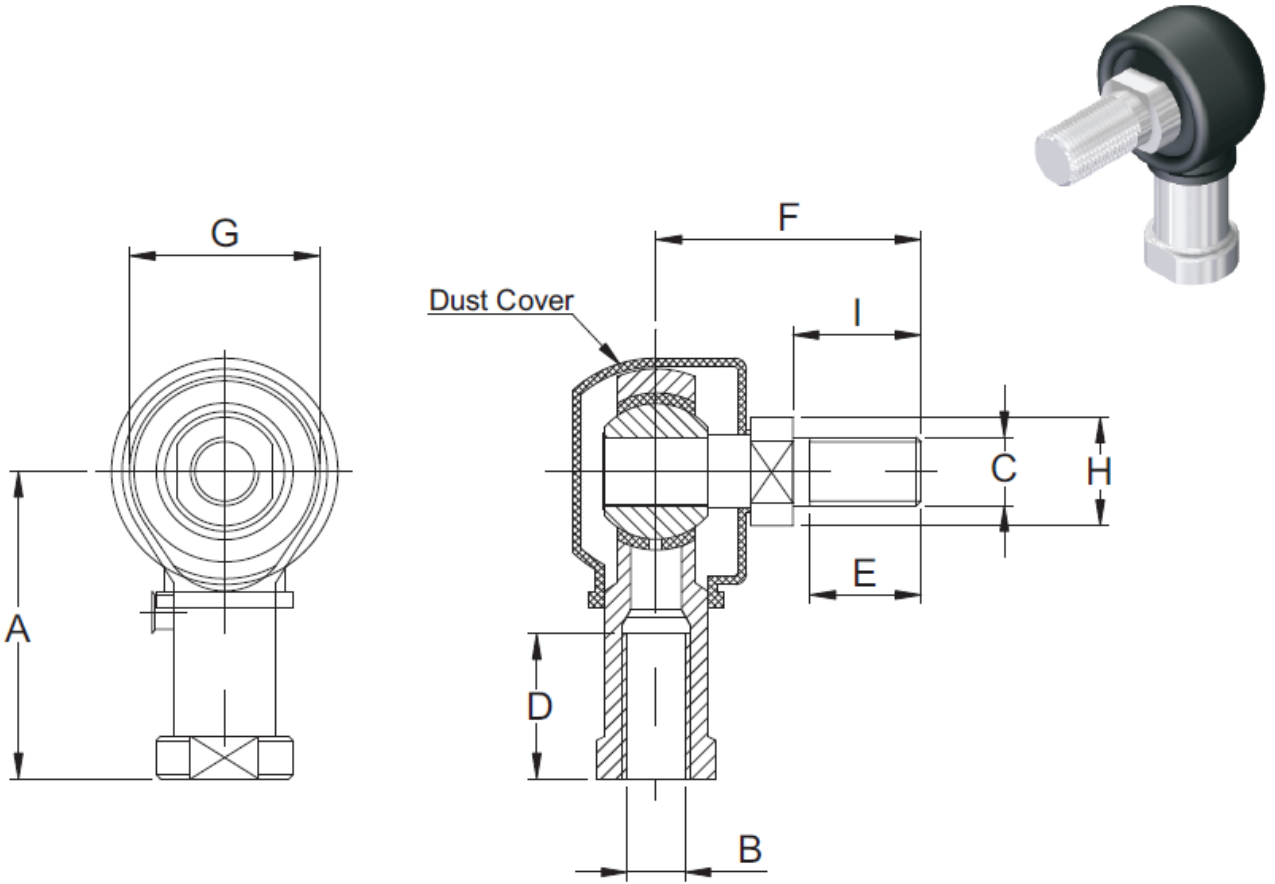
BALL JOINTS XCX:



Part No.	A	B	C	E	F	G	H	I	J	Static Load KN
XCX-6	30	M6x1.0	M6x1.0	16	11	26	11	10	15	6.93
XCX-8	36	M8x1.25	M8x1.25	19	12	31	14	12	17	8.75
XCX-10S	43	M10x1.25	M10x1.25	23	15	37	17	17	20	12.81
XCX-10	43	M10x1.5	M10x1.5	23	21	43	17	17	26	12.81

- Material : High strength zinc/A1 alloy
- LH threads available

BALL JOINTS XCR:



PART NO.	A	B	C	D	E	F	G	H	I
XCR-6	30.0	M6X1.0	M6X1.0	16.0	11.0	26.0	18.0	10.0	15.0
XCR-8	36.0	M8X1.25	M8X1.25	17.0	13.0	31.0	22.0	12.7	15.0
XCR-0813	36.0	M8X1.25	M10X1.25	17.0	19.0	36.0	22.0	16.0	22.0
XCR-0815	36.0	M8X1.25	M10X1.5	17.0	19.0	36.0	22.0	16.0	22.0
XCR-10	43.0	M10X1.5	M10X1.5	20.0	15.5	38.5	28.0	14.0	20.0
XCR-1015	43.0	M10X1.5	M8X1.25	20.0	13.0	36.0	28.0	12.7	15.0
XCR-10S	43.0	M10X1.25	M10X1.25	20.0	15.5	38.5	28.0	14.0	20.0
XCR-1013	43.0	M10X1.25	M8X1.25	20.0	13.0	36.0	28.0	12.7	15.0

- Stud Material : 39NiCrM03/EN24.
- Dust Cover : Neoprene.