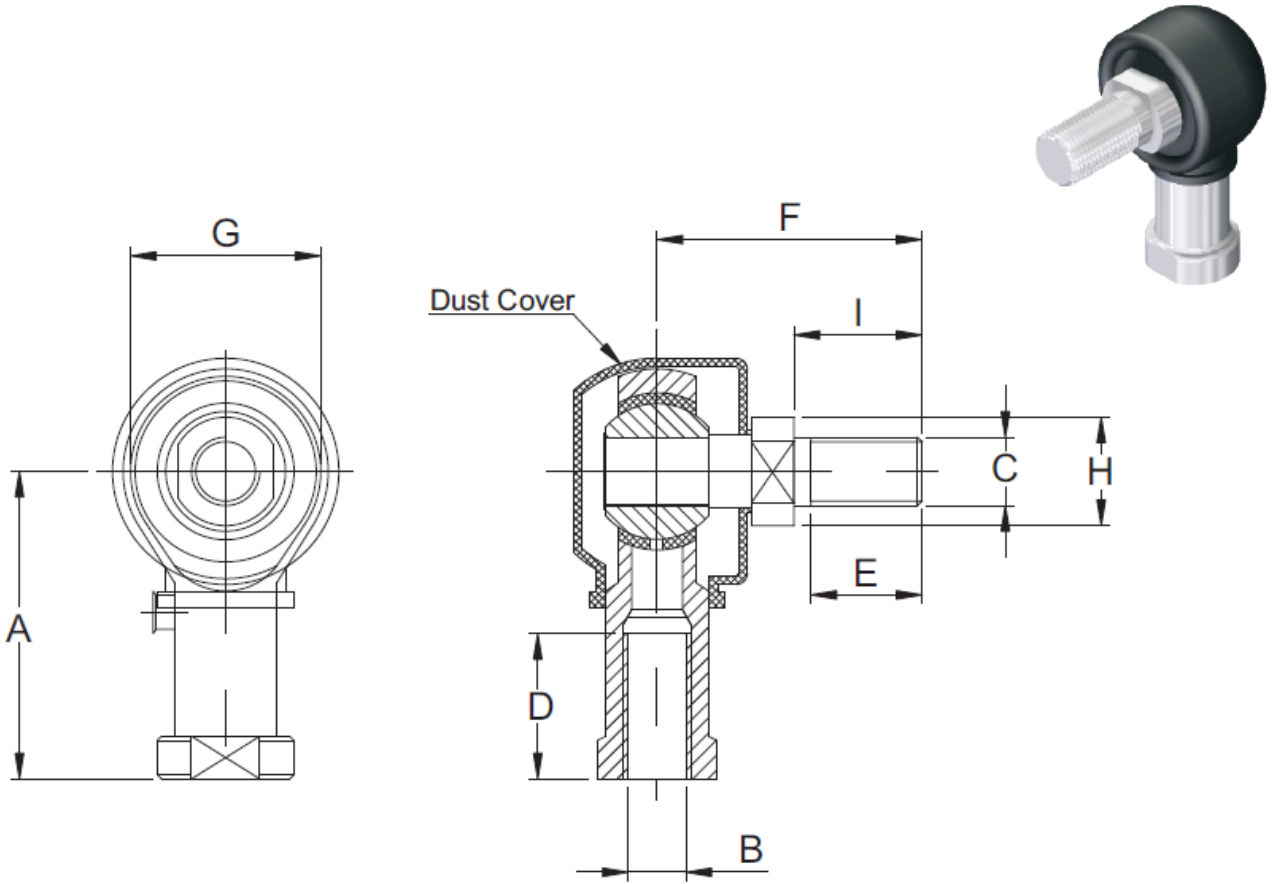


BALL JOINTS XCR:



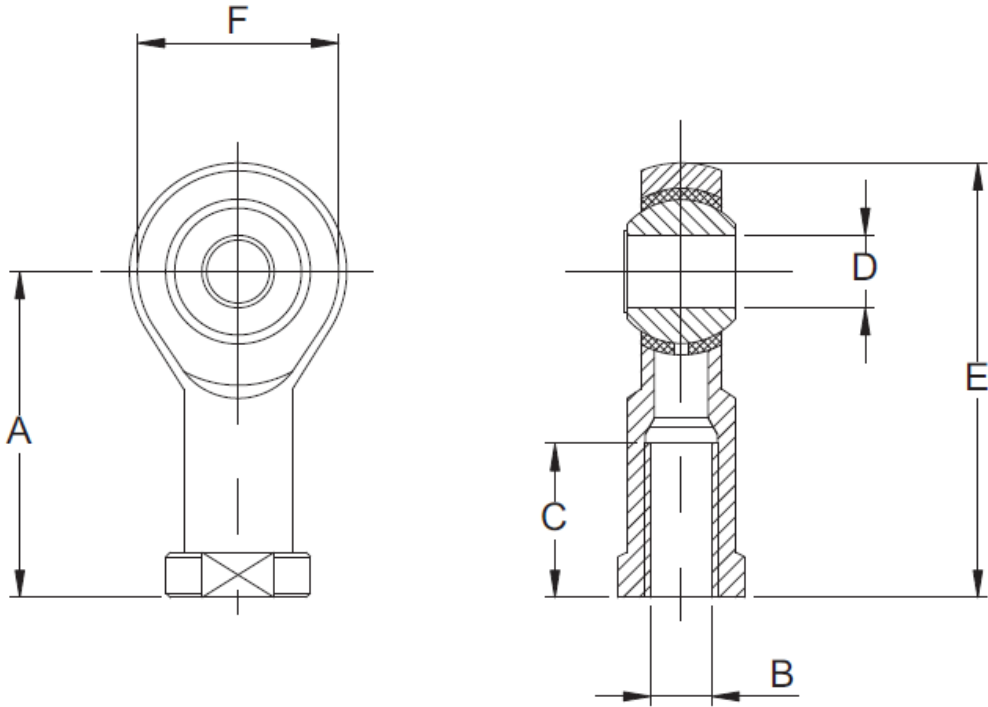
| PART NO. | A | B | C | D | E | F | G | H | I |
|----------|------|----------|----------|------|------|------|------|------|------|
| XCR-6 | 30.0 | M6X1.0 | M6X1.0 | 16.0 | 11.0 | 26.0 | 18.0 | 10.0 | 15.0 |
| XCR-8 | 36.0 | M8X1.25 | M8X1.25 | 17.0 | 13.0 | 31.0 | 22.0 | 12.7 | 15.0 |
| XCR-0813 | 36.0 | M8X1.25 | M10X1.25 | 17.0 | 19.0 | 36.0 | 22.0 | 16.0 | 22.0 |
| XCR-0815 | 36.0 | M8X1.25 | M10X1.5 | 17.0 | 19.0 | 36.0 | 22.0 | 16.0 | 22.0 |
| XCR-10 | 43.0 | M10X1.5 | M10X1.5 | 20.0 | 15.5 | 38.5 | 28.0 | 14.0 | 20.0 |
| XCR-1015 | 43.0 | M10X1.5 | M8X1.25 | 20.0 | 13.0 | 36.0 | 28.0 | 12.7 | 15.0 |
| XCR-10S | 43.0 | M10X1.25 | M10X1.25 | 20.0 | 15.5 | 38.5 | 28.0 | 14.0 | 20.0 |
| XCR-1013 | 43.0 | M10X1.25 | M8X1.25 | 20.0 | 13.0 | 36.0 | 28.0 | 12.7 | 15.0 |

- Stud Material : 39NiCrM03/EN24.
- Dust Cover : Neoprene.

ROD ENDS:

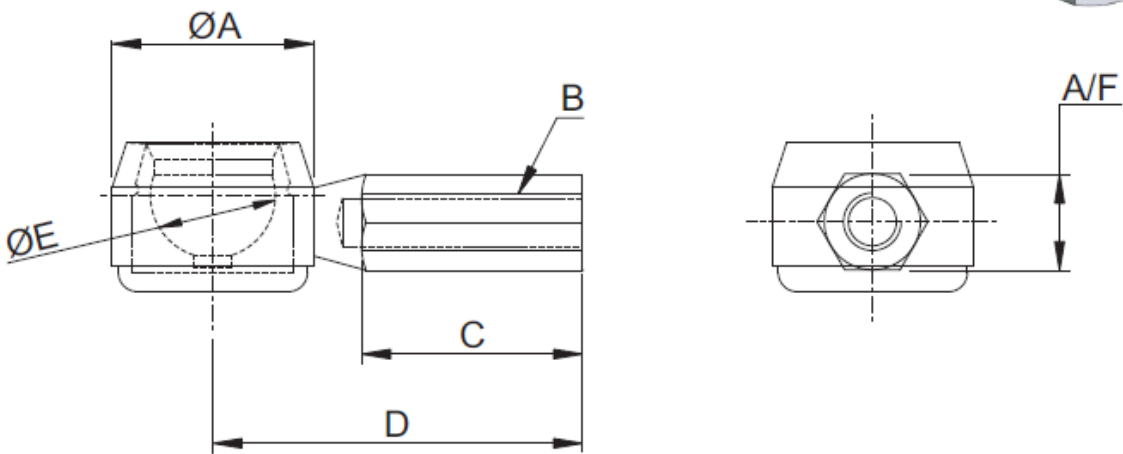
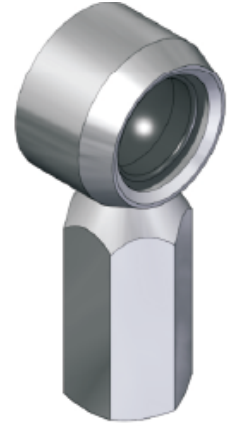


ROD ENDS XRM:



| PART NO. | A | B | C | D | E | F |
|----------|------|----------|------|------|------|------|
| XRM-6 | 30.0 | M6X1.0 | 16.0 | 6.0 | 37.0 | 18.0 |
| XRM-8 | 36.0 | M8X1.25 | 17.0 | 8.0 | 47.0 | 22.0 |
| XRM-0806 | 36.0 | M6X1.0 | 17.0 | 8.0 | 47.0 | 22.0 |
| XRM-10 | 43.0 | M10X1.5 | 20.0 | 10.0 | 57.0 | 28.0 |
| XRM-10S | 43.0 | M10X1.25 | 20.0 | 8.0 | 55.0 | 28.0 |

BALL SOCKET XBS:



| PART NO. | A | B | C | D | E | A/F |
|----------|------|---------|------|------|------|------|
| XBS-6 | 16.5 | M6X1.0 | 20.0 | 36.0 | 10.0 | 10.0 |
| XBS-6A | 21.0 | M6X1.0 | 20.0 | 38.5 | 13.0 | 10.0 |
| XBS-8A | 22.0 | M8X1.25 | 22.0 | 37.0 | 13.0 | 13.0 |
| XBS-8B | 22.0 | M8X1.25 | 16.0 | 32.0 | 13.0 | 13.0 |

- Hex. Stud Material : EN1A.
- Outer Cup : EN1A.
- Inner Cap : ENGG. PLASTIC